



Victoria Road, Mill Hill, NW7 4SF
£499,995 Leasehold Council Tax Band E

REAL ESTATES
Est. 1981

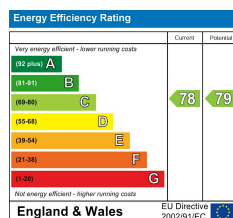
Estate Agents · Residential Sales · Investments · Lettings

CHAIN FREE- Real Estates are please to offer for sale this two double bedroom second (top) floor apartment in this purpose built, gated development, within a stone's throw to Mill Hill Broadway's excellent choice of boutiques, restaurants, coffee shops, places of worship and transport links including the Thameslink station.

The accommodation provides a reception room, fully fitted kitchen/breakfast room, 2 bedrooms and 2 bathrooms (1 en suite).

Other features include a PRIVATE BALCONY with fabulous views overlooking St Joseph's fields, LIFT, entryphone system, communal gardens and an ALLOCATED GATED PARKING SPACE.

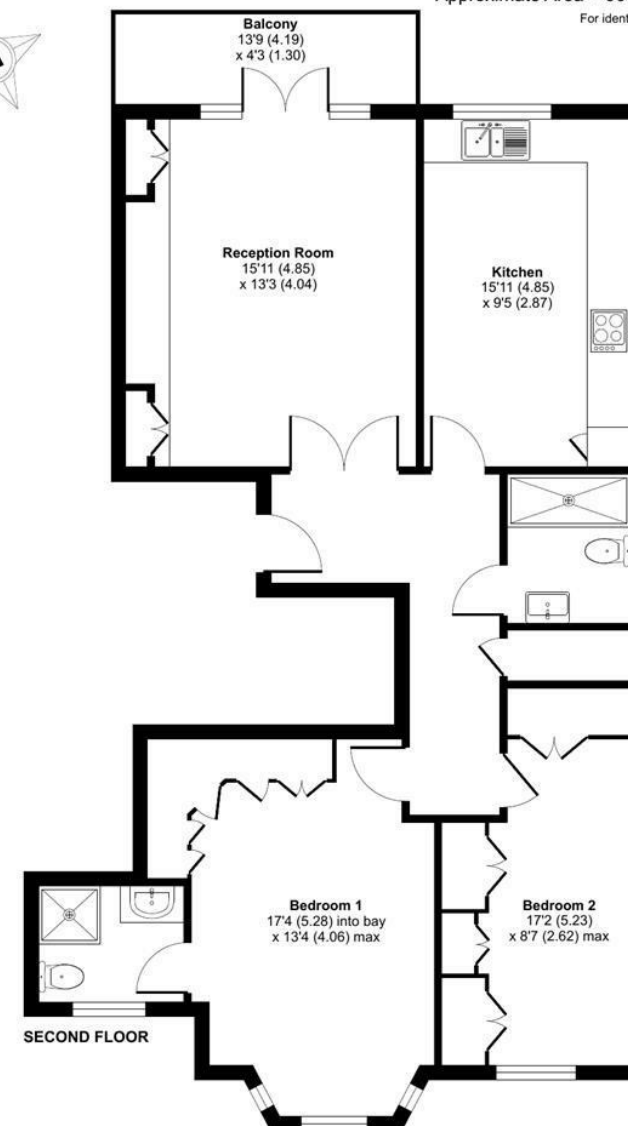
Please contact our Totteridge office for further information or to arrange a viewing.



Lowlands Court, Victoria Road, London, NW7

Approximate Area = 900 sq ft / 83.6 sq m

For identification only - Not to scale



Floor plan produced in accordance with RICS Property Measurement Standards incorporating International Property Measurement Standards (IPMS2 Residential). © nichecom 2024. Produced for Real Estates. REF: 1069867